

FuelParts™

Your One Stop Shop for Fuel Parts and Accessories

*12 Months Warranty**

1300 FUELCO | SALES@FUEL-PARTS.COM | FUELCO.COM.AU



HIGH QUALITY TESTED PARTS / SHORT LEAD TIMES

COMPETITIVE PRICING / EXCELLENT SERVICE



We have an extensive range of specialised FUEL STORAGE TANK PARTS AND ACCESSORIES in stock now, that comply with the relevant Australian and Global standards.

Our large stock of parts and accessories include pumps (PIUSI, FILLRITE etc.), AdBlue equipment, Fuel Bowers, Fuel Management Systems (SMARTFILL, COMPAC, PIUSI), Flow Meters & Nozzles (Fuelco, TCS) and many more...

Call us on
1300 FUELCO or 0448 782 435 (after-hours)
for a quote or for any technical advice.



| | |
|---------------------------|-----------|
| PUMPS & KITS | 3 |
| FUEL MANAGEMENT | 18 |
| NOZZLES | 21 |
| SWIVELS | 24 |
| HOSES | 25 |
| FILTERS | 28 |
| FLOW METERS | 30 |
| FLOW METER ADD-ONS | 39 |
| FLOW VALVES | 40 |
| FLUID MONITORS | 41 |
| FUEL DISPENSERS | 42 |
| POLY TANKS | 43 |
| TANK GAUGING | 46 |
| MISCELLANEOUS | 48 |



**Pump 12V DC
PIUSI 45lpm
Pitstop**

12V PUMP



**Pump 12V DC
PIUSI 50lpm EX50**

FK1250



**Piusi 56 LPM
Pump**

Flow-rate: up to
56 LPM

56 PMP



**Pump 240V AC
PIUSI 56lpm
Panther 56**

240V AC 56



**Piusi 72 LPM
Pump Panther**

Flow-rate: up to
72 LPM

F1376



**Piusi EX50 - EX75
Pump ULP**

Flow-rate: up to
75 LPM

FK1250



**Piusi Bi-Pump 12v
w/switch**

Flow-rate: up to
85 LPM

F1408



**Pump 24V DC
PIUSI 85lpm
BiPump**

24V BI PUMP



Piusi E80- E120 Pump

Flow-rate: up to 100 LPM

F1374



Pump 240V AC PIUSI 14lpm Visco Flowmat 230/3

240V VISCOMAT



Pump 240V AC PIUSI 100lpm

240V E120



Pump 240V AC PIUSI 550lpm E300

Flow-rate: up to 300 LPM

240V E300



Pump 240V AC PIUSI 9lpm Viscomat 200/2 M

240V 200/2 M



Pump 240V AC PIUSI 50lpm Viscomat 90M

240V VISCO 90



Pump 240V AC PIUSI 14lpm Visco Flowmat 230/3

240V 230/3



Pump 240V AC PIUSI 70lpm CUBE 70/33 comprising Pump, K33 Meter, 4m Delivery Hose, A60 Auto Nozzle

#240V K33



**ADBLUE IBC
Pump Kit 240V AC
PIUSI 34lpm**

240V 34 ADBLUE



**ADBLUE IBC
Pump Kit Three25
240V AC PIUSI
34lpm**

ADBLUE IBC



**ADBLUE Hand
Pump PIUSI
DN50** Male BSP
Thread, 2.5m delivery
hose, stainless steel
spout, 38L per 100
revolutions

ADBLUE DN50



**ADBLUE PUMP
240V AC CABINET
PIUSI**

240V AC UE



**PUMP 24V DC
PIUSI 10lpm
Battery Kit Oil**

24V DC OIL KIT



**PUMP 24V DC
PIUSI 85lpm
BiPump 4m Cable**

24V DC 85BIPUMP



**PUMP 240V AC
PIUSI 85lpm ST
Box**

240V AC ST BOX




**PUMP 12V DC
PIUSI 10lpm
Battery Kit Oil**

12V DC OIL KIT



HAND PUMP
PIUSI DN50 Male
BSP Thread, suction
pipe, 3m delivery hose,
stainless steel spout,
38L per 100 revolutions

DN50 HAND PUMP



ADBLUE HAND
Pump PIUSI IBC
Side Mount

ADBLUE IBC



PUMP 24V DC
PIUSI 50lpm
Battery Kit 3000

P 24VDC



PIUSI 240V AC
190lpm CUBE
9044

F1319





**PUMP 12V DC
PIUSI 50lpm
EX50 Kit**

12V DC EX50



**PUMP 240V AC
PIUSI 50lpm EX50**
Kit comprising Pump,
Auto Nozzle, Telescopic
Suction Tube, 4m
Delivery Hose, K33
Meter

240V AC EX50



**ADBLUE PUMP
12V DC PIUSI
34lpm**

12VDC ADBLUE



**ADBLUE HOSE IBC
PIUSI** Bottom External
Connection Suction Kit
c/w Foot Valve

IBC HOSE



**PUMP 240V AC
PIUSI 200lpm
ST200**

240V AC ST200



**PUMP 240V AC
PIUSI 200lpm
ST200 Trolley Kit**

240V ST200 KIT



**ADBLUE
PUMP 12V DC
PORTABLE Kit
PIUSI 34lpm 56
LPM**

#12V DC 56 KIT



**ADBLUE PUMP
240V AC PIUSI
34lpm**

F0935

**115 Volt AC Pump Only**

Up to 15 GPM
1/6 HP motor
UL/cUL listed pump and motor

FR604G

**115 Volt AC Pump with Hose and Manual Nozzle**

15 GPM (57 LPM)
1/6 HP motor
UL/cUL listed pump and motor

FR610G

**115V AC Pump 13 GPM (57 LPM)**

1/6 HP motor
UL/cUL listed pump and motor

FR610GA

**115 Volt AC Pump with Manual Nozzle**

18 GPM (68 LPM)
1/3 HP motor
UL/cUL listed pump and motor

FR700V

**115 Volt AC Pump with Automatic Nozzle**

13 GPM (49 LPM)
1/3 HP motor
UL/cUL listed pump and motor

FR700VA

**115 Volt AC Pump - Pump Only**

20 GPM (76 LPM)
1/3 HP motor
UL/cUL listed pump and motor

FR700VN

**115 Volt AC Pump with 807C Gallon Mechanical Meter**

15 GPM (57 LPM)
1/3 HP motor
UL/cUL listed pump

FR701V

**115 Volt AC Pump with 807C Gallon Mechanical Meter with Automatic Nozzle**

10.5 GPM (40 LPM)
1/3 HP motor

FR701VA



115V AC High Flow Pump with hose and nozzle
Up to 19 GPM (76 LPM)
1/3 HP motor UL/cUL listed pump and motor

FR701VL



115 Volt AC Pump
- Pump Only 1 in. Outlet for Higher Flow Rate
Up to 19 GPM (72 LPM) 1/3 HP motor UL/cUL listed pump and motor

FR710VB



115V AC High Flow Pump, 1 in. Ultra High Flow Automatic Nozzle, 901 Gallon Meter
Up to 18 GPM (68 LPM)
1/3 HP motor UL/cUL listed pump and motor

FR711VA



115V AC High Flow Pump, 1 in. Ultra High Flow Automatic Nozzle, 901L Liter Meter
Up to 18 GPM (68 LPM) UL/cUL listed pump and motor

FR711VLA



115V AC Pump for use with AST Remote Dispensers
20 GPM (76 LPM)
1/3 HP motor UL/cUL listed pump and motor

FR713V



115 Volt AC Pump with Hose and Manual Nozzle
13 GPM (49 LPM)
1/6 HP motor UL/cUL listed pump and motor

SD602G



115/230V High Flow AC Pump
only 20 GPM (75 LPM)
1/2 HP motor UL/cUL listed pump and motor

FR75L



115/230V for use with AST Remote Dispensers Pump only
20 GPM (75 LPM)
1/2 HP motor UL/cUL listed pump

FR710VN

**115/230V High Flow AC Pump**

Pump, hose and nozzle
35 GPM (132 LPM)
3/4 HP motor

FR132L

**115/230V High Flow AC Pump**

Pump only
35 GPM (132 LPM)
3/4 HP motor
UL/cUL listed pump and motor

FR300VN

**115/230V High Flow AC Pump**

Pump, hose, nozzle and meter
35 GPM (113 LPM)
3/4 HP motor

FR311VB

**115/230V High Flow AC Pump**

Pump, hose, nozzle and liter meter
30 GPM (113 LPM)
3/4 HP motor

FR311VLB

**115/230V High Flow AC Pump**

with Litre Meter
Pump and liter meter only
30 GPM (113 LPM)
3/4 HP motor

FR311VN

**115/230V for use with AST Remote Dispensers**

Pump only
35 GPM (132 LPM)
3/4 HP motor

FR313V

**115/230V High Flow AC Pump**

35 GPM (132 LPM)
3/4 HP Motor
UL/cUL Listed Pump and Motor

FR319VB

**115/230V High Flow AC Pump**

with Hose, Nozzle and Meter, 27 GPM (102 LPM) 3/4 HP motor 900DP digital flow meter

FR319VBP



12V DC Pump Only
Up to 15 GPM
1/4 HP motor
UL/cUL listed motor

FR1204G



12V DC Pump
with Hose and Manual
Nozzle
Up to 15 GPM
1/4 HP motor
UL/cUL listed motor

FR1210G



12V DC Pump with
Hose and Automatic
Nozzle
Up to 15 GPM
1/4 HP motor
UL/cUL listed motor

FR1210GA



12V DC Pump
with Hose, Manual
Nozzle and Meter
Up to 15 GPM
1/4 HP motor
UL/cUL listed

FR1211G



12V DC Pump with
Hose, Nozzle and Liter
Meter
Up to 15 GPM
1/4 HP motor
UL/cUL listed

FR1211GL



12V DC Pump with
In-line Digital Turbine
Meter, Up to 15 GPM
Cast Iron pump
housing, UL/cUL
certified motor and
meter

FR1219G



Portable 12V DC
1/5 HP 3/4 in NPT
Inlet No Nozzle
10 GPM
Diesel and Antifreeze
30 minute duty cycle

FR1612



Portable 12V DC
1/5 HP Rotary
Vane 3/4 in NPT Inlet
3/4 in Plastic Nozzle
10 GPM
1/5 HP motor
Diesel and Antifreeze

FR1614



**12V DC Portable,
10 GPM Fuel Transfer
Pump with Hose, Nozzle
and Suction Pipe, 10
GPM**
1/5 HP motor
Diesel and Antifreeze

FR1616



**12V DC High Flow
Pump Only**
20 GPM (76 LPM)
UL listed motor
Heavy duty cast iron
Heavy duty cast iron
construction

FR3204



**12V DC High Flow
Pump with Hose and
Manual Nozzle,
20 GPM (76 LPM)**
UL listed motor
Heavy duty cast iron

F4210G



**12V DC Hi-Flow
Pump with Hose
and Ultra Hi-Flo
Automatic Nozzle**
20 GPM (76 LPM)
UL listed motor
Heavy duty cast iron

FR4210GB



**12V DC High Flow
Pump with Hose, Hi-
Flo Automatic Nozzle
and Filter**
20 GPM (76 LPM)
UL listed motor
Heavy duty cast iron

FR4210GBFQ



**12V DC High Flow
Pump with Hose,
Manual Nozzle and
Meter**
20 GPM (76 LPM)
UL listed motor
Heavy duty cast iron

FR4211G



**12V DC High
Flow Pump with
Hose, Manual Nozzle
and Liter Meter**
20 GPM (76 LPM)
UL/cUL listed motor
Heavy duty cast iron

FR211GL



**12V DC High Flow
Pump with In-line
Digital Turbine Meter**
Up to 20 GPM
Cast Iron pump
housing
UL/cUL certified motor
and meter

FR4219G



12V DC Portable Pump with Hose and Nozzle, Up to 12 GPM (45 LPM), Compatible with gasoline, diesel, biodiesel (up to B20), kerosene and E15, Aluminum construction

RD1212NH



12V DC Portable Pump Only
Up to 12 GPM (45 LPM), Compatible with gasoline, diesel, biodiesel (up to B20), kerosene & E15

RD1212NN



12V DC Bung Mounted Pump with Hose and Nozzle
Up to 12 GPM (45 LPM)
Compatible with gasoline, diesel, biodiesel (up to B20), kerosene and E15

RD1212NP



12V DC Portable Pump with Hose and Nozzle
Up to 8 GPM (30 LPM)
Compatible with gasoline, diesel, biodiesel (up to B20), kerosene and E15

RD812NH



12V DC Portable Pump Only
Up to 8 GPM (30 LPM)
Compatible with gasoline, diesel, biodiesel (up to B20), kerosene and E15

RD812NN



12V DC Bung Mounted Pump with Hose and Nozzle
Up to 8 GPM (30 LPM), Compatible with gasoline, diesel, biodiesel (up to B20), kerosene and E15

RD812NP



12 Volt DC Pump with Hose and Manual Nozzle
Up to 13 GPM
1/4 HP motor
UL/cUL listed

SD1202G



12 Volt DC Pump with Hose and Automatic Nozzle
Up to 13 GPM
1/4 HP motor
UL/cUL listed

SD1202GA



24V DC Pump Only
57 LPM
UL, cUL, ANZEx listed motor
Heavy duty cast iron

FR2404G



24V DC Pump
with Hose and Manual Nozzle
57 LPM
UL, cUL, ANZEx listed motor
Heavy duty cast iron

FR2410G



24V DC Pump with
Hose, Manual Nozzle
and Meter
57 LPM
UL, cUL, ANZEx listed motor
Heavy duty cast iron

FR2411G



24V DC Pump with
Hose, Manual Nozzle
and Liter Meter
57 LPM
UL, cUL, ANZEx listed motor
Heavy duty cast iron

FR2411GL



24V DC High Flow Pump with Hose and Manual Nozzle
76 LPM
Heavy duty cast iron

FR4410G



NX3200 Series - Pump Only
Continuous duty for fuel transfer
25 gpm / 95 lpm
12 to 24V DC

NX3204



NX3200 Series - Pump, Hose and Nozzle
Continuous duty for fuel transfer
25 gpm / 95 lpm
12 to 24V DC

NX3210B



12/24V DC High Flow Pump Only
25 GPM
30 minute duty cycle
Heavy duty cast iron construction

FR1224G



Rotary Hand Pump
without Accessories
10 gallons per 100
revolutions
UL listed
Can be used to pump in
reverse direction

FR110



**Rotary Hand
Pump Complete**
10 gallons per 100
revolutions
UL listed
Can be used to pump
in reverse direction

FR112



**Rotary Hand Pump
Complete with Counter**
10 gallons per 100
revolutions
UL listed
Counter

FR112C



**Rotary Hand
Pump**, Telescoping
Steel Suction Pipe,
Pail Spout
10 gallons per 100
revolutions
UL listed

FR113



FRHP32V
Hand action lever
11 oz per stroke
Polypropylene
construction

#FRHP32V



SD62
**7.5 gallon Per 100
revolutions**
Pail spout
Compatible with
Diesel, Kerosene, B20
and Light Oils

SD62



**Rotary Hand
Pump** Complete with
Counter
10 gallons per 100
revolutions
UL listed
Counter

FR112CL



**12V DC High Flow
Pump** with Hose and
Ultra Hi-Flo Automatic
Nozzle

FRHIFLO

PUMPS & KITS



PUMPS & KITS



FUEL MANAGEMENT



SmartFill Gen2 FMS

FMS GENII



Compac Outdoor Payment Terminals (OPT)

C -OPT



Compac Driveway Card Acceptor (DCA)

C- DCA



Comfill FMS Easy to setup Stand alone pump control

C -COMFILL



TT8000GN Outdoor Payment Terminal

TT8000GN



TT8000Cx Outdoor Payment Terminal

TT8000Cx



TT3000 / TT4000 Site Controller (DCA)

TT3000/4000



TT1000I electro mechanical Controller

TT1000



FUEL MANAGEMENT



PIUSI Red manager key suit MC multi-user system

F1446



PIUSI USB

F1204



PIUSI Keyreader Kit

#F1205



Pump PIUSI User Key Yellow PKT 10

F1483



FUEL MANAGEMENT



FUEL MANAGEMENT

#

#



ZVA - Auto Shut-off Nozzle - Large Spout

F1669



ZVA - Auto Shut-off Nozzle - Small Spout

F1668



ZVA - Auto Shut-off Nozzle

FN - AUTO SOF



ZVA - 2nd Generation Auto Shut-off Nozzle

FN - 2 AUTO SOF



ZVA Vapour Recovery Automatic Fuel Nozzle

FN - ZVA VAP



Unleaded genuine ZVA Slimline auto shut off nozzle

F1353



60 Manual Nozzle

FN - 60 MANUAL



80 Manual Nozzle

F1681



Automatic Diesel Fuel Nozzle

FN - DIESEL



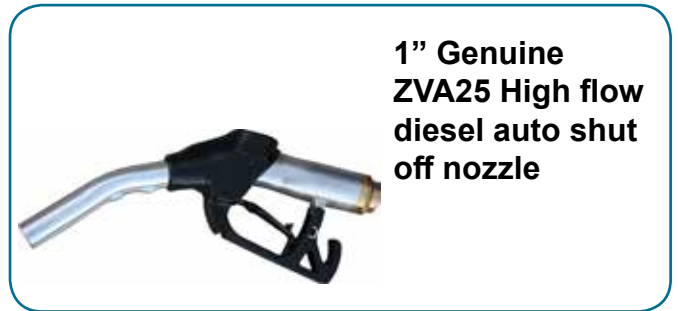
Automatic Fuel Nozzle for Self-service Fuel Dispense

FN - SS AUTO



Poly Automatic DEF Nozzle

FF1667



1" Genuine ZVA25 High flow diesel auto shut off nozzle

F0152



Automatic Fuel Nozzle (with two main valves inside, different from 11A nozzle)

FN -1A



New type of Adblue Nozzle with Meter

New

F1671



1 in Diesel Arctic Nozzle
Operates to minus 40°F
Compatible with Diesel Fuels
UL Listed

FN -1DA



3/4 in Auto Nozzle with Hook - Unleaded
Compatible with unleaded gasoline
UL listed
3/4 in aluminum nozzle

FN - 3/4AUTO



1 in Ultra Hi-Flow Nozzle

UL listed for gasoline, diesel and kerosene
1 1/8 in OD spout
Three-position latch

FN - ULTRA HF1



1 in Ultra Hi-Flow Nozzle

UL listed for gasoline, diesel and kerosene
1 in NPT-F inlet, 1 1/8 in OD spout
Three-position latch

FN - ULTRA HF1/8



1 in Ultra Hi-Flow Nozzle

UL listed for gasoline, diesel and kerosene
1 in NPT-F inlet, 1 1/8 in OD spout
Three-position latch

F1674



1" Automatic Nozzle with Hook

Integral hook and spout spring
Three locking flow rate positions

FN -AUTO 1



1 in Automatic Nozzle with Hook

Integral hook and spout spring
Three locking flow-rate positions

FN - 1 AUTOHOOK



3/4 in Auto Nozzle with Hook - Diesel

UL listed
3/4 in aluminum nozzle

FN -3/4HOOK



Plastic Nozzle Holder with switch

F1683



Aluminium Nozzle Holder with Switch

F1682



Rotating joint,
new type 3/4"

Rotating joint,
new type 1"

R-JOINT 1"



Fixed joint,new
type 3/4"

Fixed joint,new
type 1"

F-JOINT 1"



Swivel, aluminum
alloy, material,3/4"

Swivel, aluminum
alloy, material,1"

SWIVEL 3/4



1" Breakaway

BREAKAWAY



Nozzle Swivel,
3/4", bsp

F1651



3/4" BSP Male -
3/4" Female BSP
swivel

BSP FEMALE



3/4" F Non-
Reconnectable
Breakaway
3/4" F x 3/4" F
Lightweight
Instant closing poppet
check valve

B075F350



Nozzle Swivel, 1",
bsp

F1653



EPDM hoses

EPDM HOSE



EPDM Kit suction hose

EPDM KIT



1 in x 12 ft UL Hose
1 in. NPT fittings
12 ft. length
Model 1 in., UL listed

300F7773



3/4 in x 12 ft UL Hose
3/4 in. NPT fittings
12 ft. length
Model 3/4 in., UL listed

700F3135



3/4 in x 12 ft Retail Hose
Dispense diesel fuel, gasoline, kerosene, and petroleum oils
Neoprene exterior

FRH07512



3/4 in x 14 ft Retail Hose
Dispense diesel fuel, gasoline, kerosene, and petroleum oils
Neoprene exterior

FRH07514



Dispensing hoses
Antistatic rubber hose for oil and diesel fuel (delivery hose)

RUBBER HOSE



Suction crimped hoses
Antistatic hose with crimped ends (suction hose)

SUCTION HOSE

**3/4 in x 20 ft Retail Hose**

Dispense diesel fuel, gasoline, kerosene, and petroleum oils
Neoprene exterior

FRH07520

**1 in x 12 ft Retail Hose**

Dispense diesel fuel, gasoline, kerosene, and Petroleum oils
Neoprene exterior

FRH10012

**1 in x 10m Retail Hose**

Dispense diesel fuel, gasoline, kerosene, and Petroleum oils
Neoprene exterior

FRH10010

**1 in x 8m Retail Hose**

Dispense diesel fuel, gasoline, kerosene, and Petroleum oils
Neoprene exterior

FRH10008

**1 in x 6m Retail Hose**

Dispense diesel fuel, gasoline, kerosene, and Petroleum oils
Neoprene exterior

FRH10006

**5/8 in x 4m Retail Hose**

Dispense diesel fuel, gasoline, kerosene, and Petroleum oils
Neoprene exterior

FRH10584

**5/8 in x 6m Retail Hose**

Dispense diesel fuel, gasoline, kerosene, and Petroleum oils
Neoprene exterior

FRH100586

**5/8 in x 8m Retail Hose**

Dispense diesel fuel, gasoline, kerosene, and Petroleum oils
Neoprene exterior

FRH100588



1 in x 14 ft Retail Hose

Dispense diesel fuel, gasoline, kerosene, and petroleum oils
Neoprene exterior

FRH10012



1 in x 20 ft Retail Hose

Dispense diesel fuel, gasoline, kerosene, and petroleum oils
Neoprene exterior

FRH10020



3/4 in x 15 ft Retail Arctic Fuel Transfer Hose

Operates to -40°F (-40°C), Diesel, gasoline, kerosene, E15, and biodiesel

FRHA07515



1 in x 20 ft Retail Arctic Fuel Transfer Hose

Operates to -40°F / -40°F Diesel, gasoline, kerosene, E15, and biodiesel up to B20

FRHA10020



3/4 in X 12 ft Hose w/ Stainless Steel Threads
For use with Diesel Exhaust Fluid (DEF)

FRHS075125



3/4" Whip Hose
3/4 inch x 9 inch
Highly resistant to cuts, abrasions, sun and weather

WH07509



1" Whip Hose
1" x 12"
Highly resistant to cuts, abrasions, sun and weather

WH10012



Stainless steel clamp

CLAMP



Donaldson Clean Diesel Kits - easy to install on any fuel dispenser flow rates from 122 lpm / 32 gpm to 473 lpm / 125 gpm your equipment's

DDDFILTER



DONALDSON Filter P574959

F0959



DONALDSON P575333 FUEL FILTER
for use on slip tanks, mobile service trucks, inside fuel dispensers and where space is limited

DDDFILTER



Filter Kit - DONALDSON | Filter Clean And Dry Diesel Filtration Kit

DDDADBLUE



DONALDSON Filter P561183

F0958



DONALDSON Filter DBB8665

F0956



DONALDSON Filter P536036 AIR FILTER, PRIMARY RADIALSEAL

F0957



DONALDSON Filter DBB0248

F0955



Filter - DONALDSON Bulk TRAP Breather Large Assembly DN40 (1.5")

DDBREATHER



Filter - DONALDSON Bulk TRAP Breather Small

F0954



PIUSI Filter 5 micro single cartridge

F1470



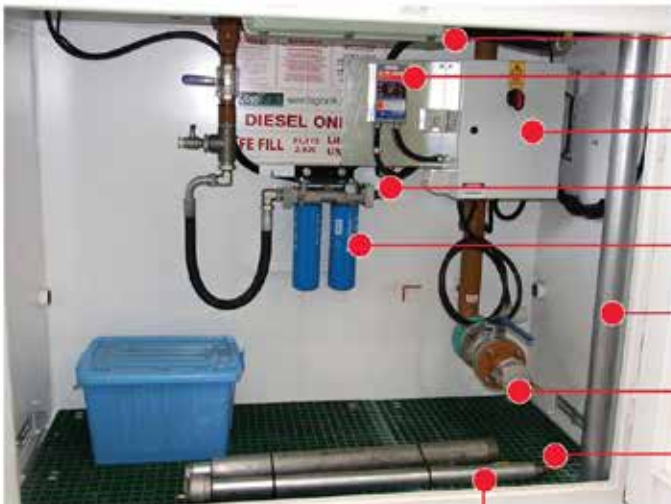
PIUSI Filter 5 micro 2 cartridge

F1331

FILTERS

LOOK WHAT'S INSIDE SELF BUNDED FUEL TANK PUMP BAY

PUMP BAY



80-100lpm Dispensing Package

- Strip LED Light
- Smart Controller for Franklin Sub Pump
- Control Box/Electrical Fitout (AS3000)
- Pulse/Flow Meter - Pulse output 1.5"
- Donaldson Filter - Dual Manifold, 7 Micron, Dirt only
- Hi-Mast Hose Retractor, 8m x 25mm (1") id Fuel Hose and 25mm (1") Automatic Nozzle
- Unloading
- Grid Mesh
- Vent Pipe



TCS Rotary Positive Displacement Flow Meter TCS-700-15 up to 60 GPM (227 LPM)

TCS 700-15



TCS Rotary Positive Displacement Flow Meter TCS-700-20 up to 100 GPM (380 LPM)

TCS 700-20



TCS Rotary Positive Displacement Flow Meter TCS-700-25 to 150 GPM (567 LPM)

TCS 700-25



TCS Rotary Positive Displacement Flow Meter TCS-700-30 up to 200 GPM (760 LPM)

TCS 700-30



TCS Rotary Positive Displacement Flow Meter TCS-700-35 to 300 GPM (1,135 LPM)

TCS 700-35



TCS Flow Meter-TCS-700-40 500 GPM (1,893 LPM)

TCS 700-40



TCS Flow Meter-TCS-700-45 600 GPM (2,271 LPM)

TCS 700-45

TCS Flow Meter-TCS-700-60 800 GPM (3,040 LPM)



TCS 700-60

TCS Flow Meter-TCS-700-65 1,000 GPM (3,800 LPM)



TCS 700-65



FLOW METERS



Oval gear electronic flow meters in acetal resin for controlling the non commercial dispensing

ELECTRONIC MTS



High Quality Flow Meters - Fuelco

F1665



K24 ATEX/IECEX Digital flow meters for low-viscosity fluids

K24 ATEX/IECEX



K24 AdBlue® and TURBINOX K24 flow meter for Adblue®

K24



K33 - K44 Mechanical meters
Mod. K33, 3 digit partial totals (max 999 litres), 6 digit totals
Mod. K44, 4 digit partial totals (max 9999 litres), 7 digit totals

K33 - K44



K33 ATEX flow meter can be installed in any position on either rigid or flexible pipes or directly on pumps or tanks

K33 ATEX



K400 Oval gear electronic flow meters and oval gear pulser flow meters

K400



K600 B/3 Oval gear electronic flow meters in acetal resin

K600 B/3



K600/3
Oval gear electronic flow meters in acetal resin for controlling the non commercial dispensing

K600 / 3



K700
Oval gear mechanical flow meters designed for accurate measuring

K700



K900 Oval gear electronic flow meters in acetal resin for controlling the non commercial dispensing

K900



K200
Oval gear electronic flow meters in acetal resin for controlling the non commercial dispensing

K200



PULSE-METERS
 Oval gear electronic meters in acetal resin for measuring low, medium and high viscosity fluids

K400



K24
Digital flow meters for low-viscosity fluids

K1434



REMOTE DISPLAY FOR PULSE METER
 Remote display for remote control (via max. 15 m. cable) of pulse meters

K600 / 3



**3-Wheel
Mechanical, 1 in
Gravity Meter with
Strainer**
+/- 1% Accuracy
UL/cUL, CE Listed
5-20 GPM

806C



**3-Wheel
Mechanical, 1 in.
Gravity Liter Meter
with Strainer**
+/- 1% accuracy
UL/cUL, CE listed
19 - 76 LPM

806CL



**3-Wheel
Mechanical, 3/4 in
Meter, 5 - 20 GPM**
+/- 1% accuracy
UL/cUL, CE listed
5-20 GPM

807C



**3-Wheel
Mechanical, 1 in
Meter**
+/- 1% accuracy
UL/cUL, CE listed
5-20 GPM

807C1



**3-Wheel
Mechanical, 3/4 in
Liter Meter, 19-76
LPM**
+/- 1% Accuracy
UL/cUL, CE Listed
19-76 LPM

807CL



**3-Wheel
Mechanical, 1 in
Liter Meter**
+/- 1% accuracy
UL/cUL, CE listed
19 - 76 LPM

807CL1



**3-Wheel
Mechanical, 3/4 in
Meter**
+/- 1% accuracy
UL/cUL, CE listed
5-20 GPM

807CMK



**3-Wheel
Mechanical, 1 in
Meter**
+/- 1% accuracy
UL/cUL, CE listed
5-20 GPM

807CN1



4-Wheel Mechanical Meter, 1 in Meter
+/- 2% accuracy
UL/cUL, CE listed
6-40 GPM

901C



4-Wheel Mechanical Meter, 1.5 in Meter
+/- 2% accuracy
UL/cUL, CE listed
6-40 GPM

901C1.5



4-Wheel Mechanical Meter, 1 in Meter
+/- 2% accuracy
UL/cUL, CE listed
23 - 151 LPM

901CL



4 Wheel Mechanical Meter, 1.5 in Meter
23-151 LPM
+/- 2% Accuracy
UL/cUL, CE Listed
23-151 GPM

901CL1.5



4-Wheel Mechanical Meter, 1.5 in Meter
+/- 2% Accuracy
UL/cUL, CE listed
23-151 LPM

901CLMK300



4-Wheel Mechanical Liter Meter, 1.5 in Meter
+/- 2% accuracy
UL/cUL, CE listed
23-151 LPM

901CLN1.5



4-Wheel Mechanical Meter, 1 in Meter 6-40 GPM, in package Pipe fittings to fit 300V Series pumps
+/- 2% accuracy
UL / cUL, CE listed
6 - 40 GPM

901CMK300V



4-Wheel Mechanical Meter, 1 in Meter
+/- 2% Accuracy
UL/cUL, CE listed
6-40 GPM

807CN1



Digital Meter, 1.5 in. Inlet, 1.5 in. Outlet
 +/- 1.25 % Accuracy
 6-40 GPM
 50 psi

900CD1.5BSPT



Digital Meter, 1 in. Inlet, 1 in. Outlet
 +/- 1.25 % accuracy
 6 - 40 GPM
 50 psi

900CDBSPT



Digital Meter with 1 in Inlet and Outlet
 +/-1.25% accuracy
 6-40 GPM
 Pulsar and intrinsically safe barrier included

900CDP



Digital Meter with 1.5 in. Inlet, 1.5 in. Outlet
 +/-1.25% Accuracy
 6 - 40 GPM
 Pulsar and Intrinsically Safe Barrier Included

900CDP1.5



Digital Meter with 1.5 in Inlet and Outlet
 +/-1.25% accuracy
 6-40 GPM
 Pulsar and intrinsically safe barrier included

900CDP1.5BSPT



Digital Meter with 1 in Inlet and Outlet
 +/-1.25% accuracy
 6-40 GPM
 Pulsar and intrinsically safe barrier included

900CDPBSPT



In-Line Digital Meter
 3 - 26 GPM (11 - 98 LPM)
 50 psi (3,4 bar)
 1 in. inlet and outlet

FR118A10



In-Line Digital Meter
 Compatible with water, Diesel Exhaust Fluid (DEF), or detergents
 3 - 26 GPM (11 - 98 LPM)
 70 psi (4,8 bar)

FR118P10



In-Line Digital Turbine Meter
 2-35 GPM / 8-132 LPM
 Aluminum housing
 1" BSPP

TT10AB



In-Line Digital Turbine Meter
 2-35 GPM / 8-132 LPM
 Nickel-plated aluminum housing
 1" BSPP

TT10ABC



In-Line Digital Turbine Meter
 2-35 GPM / 8-132 LPM
 Aluminum housing
 1" NPT

TT10AN



In-Line Digital Turbine Meter
 2-35 GPM / 8-132 LPM
 Nickel-plated aluminum housing
 1" NPT

TT10ANC



In-Line Digital Turbine Meter
 2-35 GPM / 8-132 LPM
 Engineered polymer
 1" BSPP

TT10PB



In-Line Digital Turbine Meter
 2-35 GPM / 8-132 LPM
 Engineered polymer
 1" NPT

900CDPBSPT



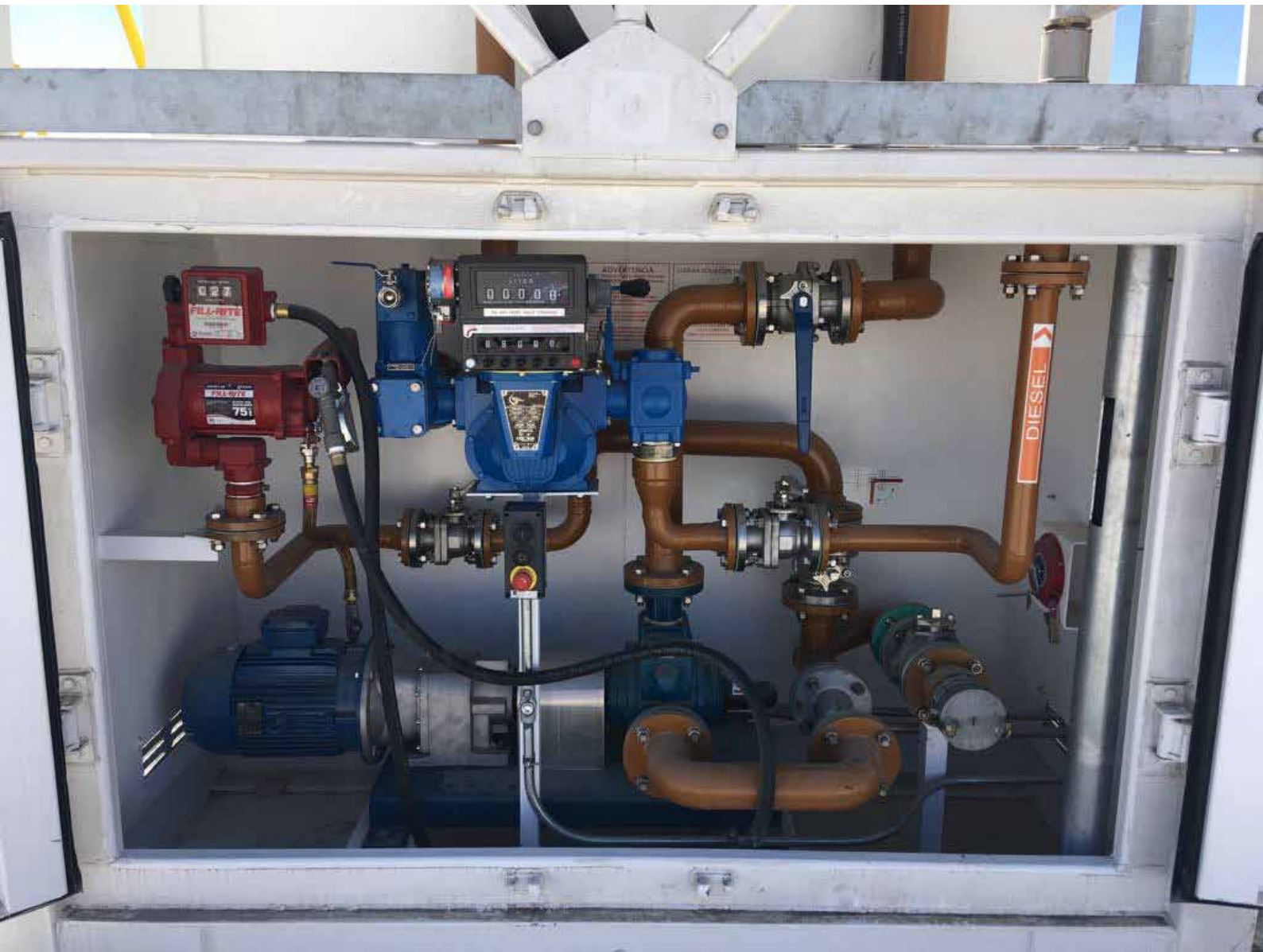
Digital Meter, 1 in inlet/outlet, 6-40 GPM
 +/- 1.25 % accuracy
 6-40 GPM
 Operates at 50 PSI

900CD



Digital Meter, 1.5 in inlet and outlet
 +/- 1.25 % accuracy
 6-40 GPM
 Operates at 50 psi

900CD1.5





740 Air and Vapor Eliminator

YCS 740



740 Vapor Eliminator and Strainer

TCS 740 VES



745 High Volume Air Eliminator & Strainer

TCS 745



747 Bulk Air Eliminator

TCS 747



748 Air Eliminator & Strainer (Electronic)

TCS 748



749 Air Eliminator/ High Volume Strainer (Electronic)

TCS 749



770 Air Eliminator & Strainer

TCS 770



TCS Pulse Transmitter

TCS PULSE



TCS 650 Hydraulic Preset Valve

TCS650



TCS 655 Electronic Control Valve

TCS655



TCS 750 Hydraulic Preset Valve

TCS 750



TCS 755 Electronic Preset Valve

TCS 755



TCS 757 Differential Pressure Valve

TCS 757



TCS 760 Air Check valves

TCS 760



TCS OCV Control Valves

TCS OCV



Spring Loaded TCS Check Valve

TCS C-VALVE



Access 85
Electronic unit for the smart control of the withdrawal of fuel from tanks by numerous users

F1405



MC BOX SYSTEM
Multi-user control panel with accessories for PC connection

F1321



OCIO2.0 240 Volt Level Indicator fitted to tank.

Connected to 2.0 dispenser via RS485 cable

F1427



TCS 3000
Electronic Register
Designed to transform the way you deliver fuel

TCS 3000



Mechanical float gauge

Reading on a scale graduated from 0 to 250 cm

FLOAT GAUGE



Automatic Tank Gauging (ATG)

ATG



ST BOX
A filling station complete with pump, flow meter and filter, with metal protection box featuring lock

F1377



MC BOX LITE
Smart multi-user control panel

Functions of the MC panel with the simplicity of the ACCESS 85

MC BOX LITE



Cube Dispenser - MC70 Manual

Diesel fuel dispenser for non commercial use. Can be fixed to walls, tanks, cisterns, drums, special pedestals

F1320



Cube Dispenser - MC70 Electronic
12V & 240V available

F1322 (12v) F1319 (240v)



SELF SERVICE FM

Sturdy structure fitted with front door for easy maintenance operations

SS FM



Diesel Fuel Dispenser - Piusi CUBE 56-70-90

Diesel fuel dispenser for non commercial use. Can be fixed to walls, tanks, cisterns, drums

CUBE 56-70-90



SELF SERVICE FM 2.0 MC100

Non-commercial diesel fuel dispenser with options, designed for users who insist on the best and accept no compromises

F1429



SELF SERVICE MC 2.0 for AdBlue®

Designed and built for compatibility with the new Self Service Management 2.0 software

SS FM2..0ADBLUE



SELF SERVICE MC for AdBlue®

New AdBlue® dispenser for non-commercial use

SS MC ADBLUE



SELF SERVICE MC 2.0

The MC 2.0 Self Service non-commercial diesel fuel dispenser

SS MC2.0



2500 L Bluemaster
Capacity: 2500 Ltrs
Length: 2460mm
Width: 1460mm
Height: 1860mm

BM2500



4000 L Bluemaster
Capacity: 4000 Ltrs
Length: 3900mm
Width: 1150mm
Height: 2340mm

BM4000



5000 L Bluemaster
Capacity: 5000 Ltrs
Length: 2850mm
Width: 2250mm
Height: 2350mm

BM5000



9000 L Bluemaster
Capacity: 9000 Ltrs
Length: 3280mm
Width: 2450mm
Height: 2950mm

BM9000



Key Features:

- Comes with submersible pump, inline meter (6m hose) & nozzle, nozzle bolster, pumpbay lighting
- Comes with a TMS (Tank Management System) which does: Level display, Level of AdBlue dispensed (through connection to a Piusi Turbinox Flowmeter), Overfill Alarm & Leak Alarm
- Tank Type: Bunded
- Double skinned for environmental protection and to safe guard against AdBlue contamination
- 12 months Warranty



1200 FuelMaster

Capacity: 1200 Ltrs
Length: 1900mm
Width: 1240mm
Height: 1790mm

FM1200



2500 L FuelMaster

Capacity: 2500 Ltrs
Length: 2460mm
Width: 1460mm
Height: 1850mm

FM2500



4000 L FuelMaster

Capacity: 4000 Ltrs
Length: 3900mm
Width: 1150mm
Height: 2340mm

FM4000



5000 L FuelMaster

Capacity: 5000 Ltrs
Length: 2850mm
Width: 2230mm
Height: 2340mm

FM5000



9000 L FuelMaster

Capacity: 9000 Ltrs
Length: 2850mm
Width: 2450mm
Height: 2450mm

FM9000

Key Features:

- 110% self bundled, roto-moulded diesel dispensing tank - natural pigmented inner tank
- Piusi Panther pump, max flowrate 79 l/min
- Piusi K33 flowmeter, 6m distribution hose
- Piusi A60 automatic nozzle
- Glass filter with water separator
- 2" filling line on the working level with camlock coupling, ball valve and SpillSTOP - mechanical overfill prevention system
- Level indicator UNIRx (litres) connected to probe
- Light in housing
- 12 months Warranty





200 L Truckmaster
Capacity: 200 Ltrs
Length: 600mm
Width: 800mm
Height: 620mm

TM200



200 L Truckmaster
Capacity: 200 Ltrs
Length: 1180mm
Width: 860mm
Height: 500mm

TM200L



300 L Truckmaster
Capacity: 300 Ltrs
Length: 600mm
Width: 800mm
Height: 890mm

TM300



430 L Truckmaster
Capacity: 430 Ltrs
Length: 1180mm
Width: 860mm
Height: 910mm

TM430



900 L Truckmaster
Capacity: 900 Ltrs
Length: 1410mm
Width: 1050mm
Height: 1210mm

TM900

Key Features:

- Delivery Options: Tail Lift Delivery
- Suitable For Fuel: Diesel, Gas Oil
- Single Skin, Transportable
- UN Certified / Approved for Transport under ADR: Yes
- Supplied complete with 12V pump
- 12 months Warranty



TANK GAUGING



Automatic Tank Gauging (ATG)

ATG



Continuous automated inventory monitoring for consistently accurate data

TLS2



TANG GAUGING
Know what's going on in your petrol, diesel, LPG and AdBlue tanks around the clock

TLS350 S



Tanks Level Gauge - FuelParts

GAUGE - F



Maintain control of your fuelling operations using the automated variance control, leak detection and site management

TLS450



Reduces ATG installation costs for sites without ducting

TLS RF



Probes - Consistently accurate data provides the foundation for reliable inventory information

PROBES



SENSOR STICKS
Accurate and repeatable height and temperature data

F0005

TANK GAUGING



Electronic Line Leak Detection

LL ELECT



Delivery Information Systems - control and manage unattended fuel deliveries at petrol filling stations

DIS



TLS4 AUTOMATIC TANK GAUGE

TLS4



TLS4B AUTOMATIC TANK GAUGING

TLS4B



MECHANICAL FLOAT GAUGE- for direct reading level measurement

MCHGGE



OCIO2.0 240 Volt Level Indicator fitted to tank. Connected to 2.0 dispenser via RS485 cable

F1427



TANK GAUGE KIT - 0-3 Meter ranged probe. +/- 0.25% accuracy

GAUGE



Interstitial Sensor detects the presence of liquid between the double wall tanks

INT SENSOR

TANK GAUGING

TANK ACCESSORIES



PIUSI DRUM EX50
ATEX/IECEX-certified transfer unit for explosive liquids (petrol, kerosene and diesel fuel) intended for non-commercial use

EX50



PIUSI DELPHIN PRO
Diesel cars with SCR system require periodic refilling with AdBlue®

DELPHIN PRO



PIUSI BOX FOR AdBlue®
Designed to perform AdBlue® transfer and filling operations quickly and cleanly

PIUSI BOX



PIUSI PITSTOP DC
Dispenser unit with automatic hose reel; 14 metres of hose with automatic nozzle allow dispensing up to 45 l/min with DC power supply

PITSTOP DC



DRUM
Diesel transfer unit for non commercial use. Easily connected to drums via a quick 2" coupling

DRUM



ST 200 AC
High flow rate portable dispenser unit. ST 200 dispenses diesel fuel at a rate of up to 200 l/min

ST200AC



Spill Containment Bund/Grates LOGITANK

SPILL GRATE



Overfill Alarms LOGITANK

F1145



**FRPA125
Pedestal Kit**

FRPA125



Tank Vent Cap
Relieves dangerous vapor buildup and over expansion/contraction of the tank
Powder-coated finish
Hole and tab for padlock security

FRTC



Tank Vent Cap with Base
Relieves dangerous vapor buildup and over expansion/contraction of the tank

FRTCB



1" Telescoping Suction Pipe
Extends 20 inches to 34 3/4 inches
Steel construction

1200KTG9099



1/2" Telescoping Suction Pipe
Extends 21 inches to 36 inches
Polypropylene construction

30F1879



DAB Submersible Pump

#F1072



3/4 in Multi-Plane Swivel
Double O-ring Seals at each Swivel Provide Long Life at Low Temps (-40° F/C)

S075H1314



1 in Multi-Plane Swivel
Double O-ring Seals at each Swivel Provide Long Life at Low Temps (-40° F/C)

S100H1315



DECALS - VARIOUS CUSTOM & STATIC

DECALS



DECALS - VARIOUS CUSTOM & STATIC

DECALS



DECALS - VARIOUS CUSTOM & STATIC

DECALS



DECALS - VARIOUS CUSTOM & STATIC

DECALS



CUSTOM COLOURS FOR TANK AND BRANDING AS REQUIRED

DECALS



SPILL KIT
120L - F1678
240L - F1679

F1678 / F1679



DIVER6
Multi-stage submersible pump. Anti-corrosive and high resistant materials. Ma flow rate up to 5,4 m3/h

DIVER6



The unique Rapid Overfill Protection Valve allows tanks to be filled at up to 1500 lpm

S100H1315





After Hours: 0448 782 435



A Licensed Trademark of Fuelco Australia

1300 FUELCO | SALES@FUEL-PARTS.COM | FUELCO.COM.AU